

SK DIN 69871 (ISO 7388-1) TOOL HOLDERS

HYDRAULIC EXPANSIONS CHUCK	20
SHRINK FIT CHUCK	23
ER COLLET CHUCK	24
POWER MILLING CHUCK	25
MICRO-COMPENSATION TAPPING CHUCK	26
SIDE LOCK HOLDER	27
2° SIDE LOCK HOLDER	27
INTEGRAL DRILL CHUCK HOLDER	28
SHELL END MILL ARBOR	28
FACE MILLING CUTTER HOLDER	29
SLOTING CUTTER HOLDER	29



TAPER SHANK INTERFACE SK DIN 69871(ISO 7388-1)-FORMS AND FEATURES

FEATURES:

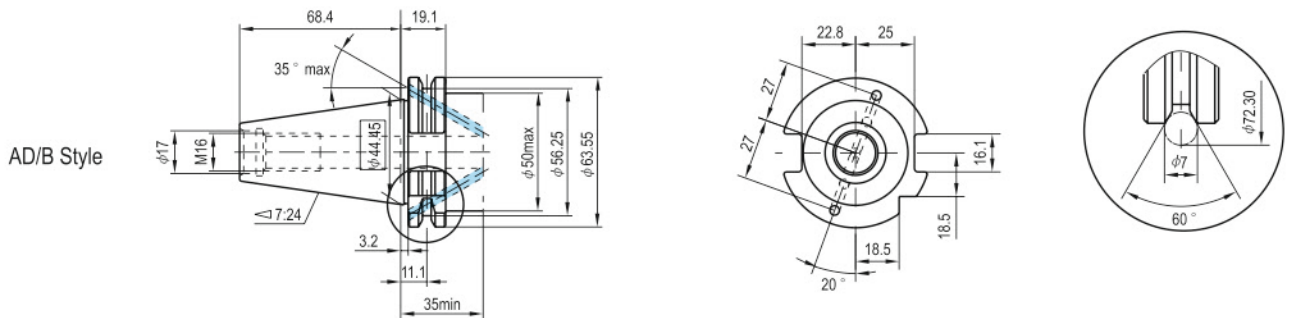
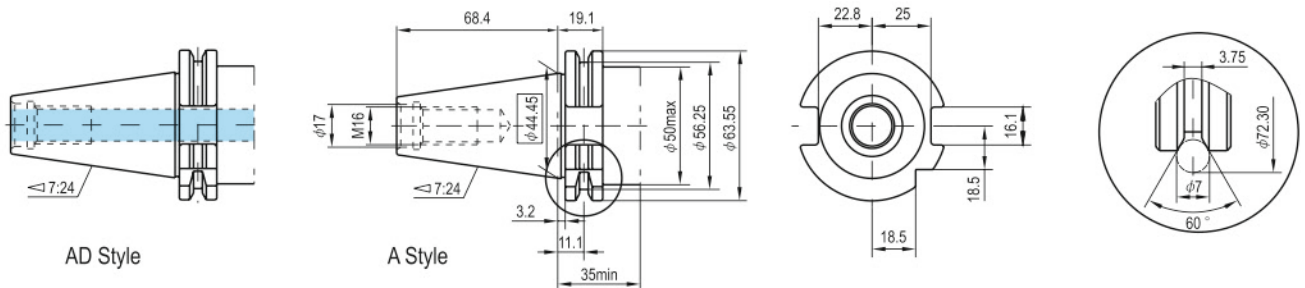
- Used for NC machines and machining center.
- Extremely high tool quality protects the machine spindle and extends the life time of the tools.

Form A: without through hole.

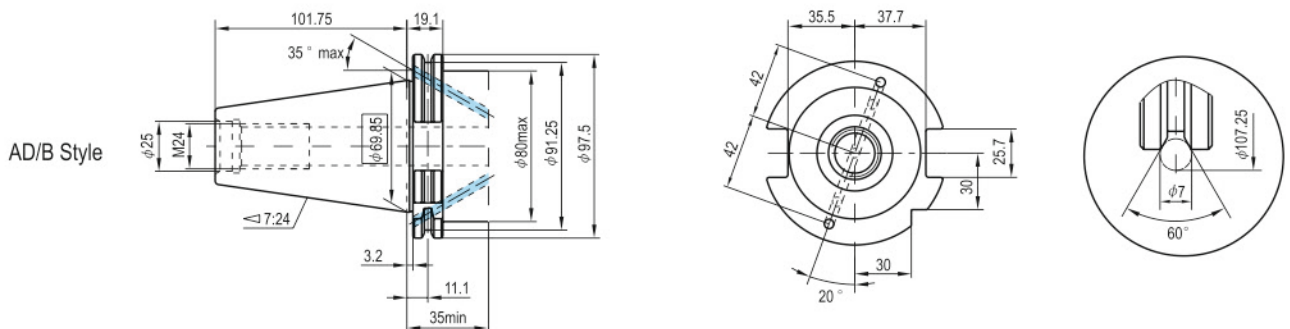
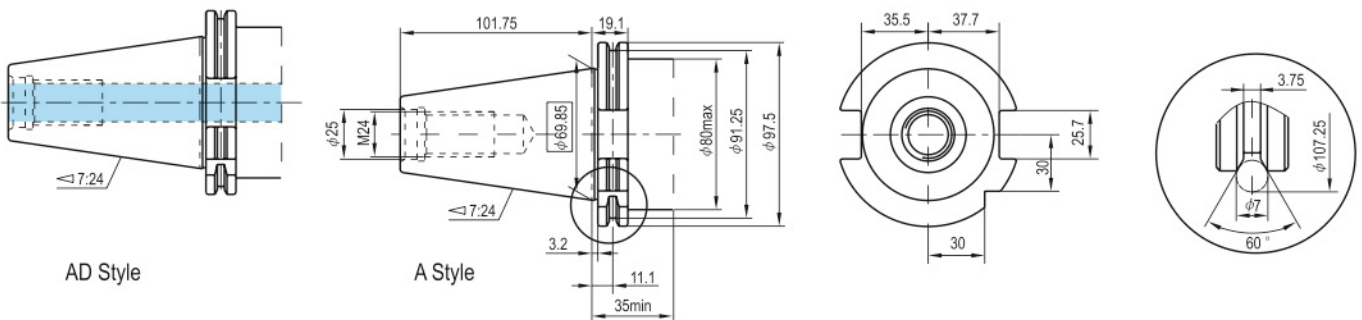
Form AD: with through hole for central coolant feed.

Form AD/B: for lateral coolant feed via the tool collar.

SK40 DIN 69871(ISO 7388-1)

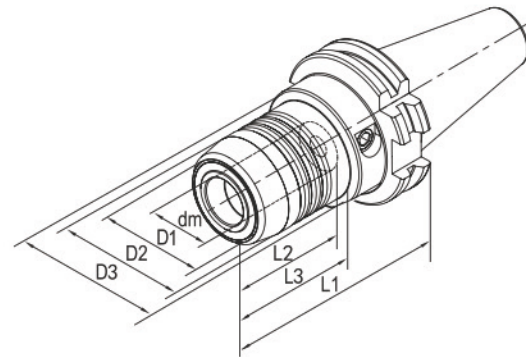
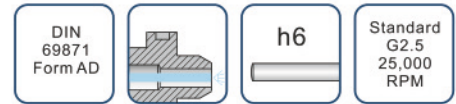


SK50 DIN 69871(ISO 7388-1)



HYDRAULIC EXPANSIONS CHUCK

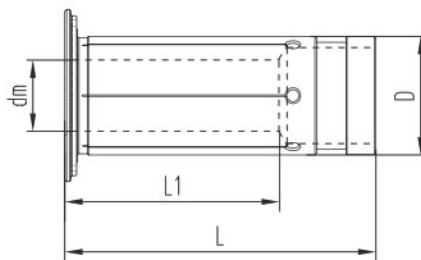
- Super transmitted torque for high clamping reliability.
- Radial run-out less than 3μ (system accuracy at 4xd)
- For clamping cutting tools with cylindric shank tolerance h6
- Flexible clamping range due to use of reducing sleeve for Various shank.
- Axial length adjustment available and max. adjustment travel 10mm.
- Ideal damping characteristics, resulting in optimum surface finish, increase cutter life time and spindle protection.



Order No.	Modle	Shank	Size(mm)							Screw	Screw wrench	for Collets
			dm	D1	D2	D3	L1	L2	L3			
132-01-401	JT40-HCM06-80.5	SK40-AD	6	22	26	50	80.5	37	29.5	HCS005014C	TS5	-
132-01-402	JT40-HCM08-80.5	SK40-AD	8	24	28	50	80.5	37	30	HCS006014C	TS5	-
132-01-403	JT40-HCM10-80.5	SK40-AD	10	26	30	50	80.5	41	31	HCS008014C	TS5	-
132-01-404	JT40-HCM12-80.5	SK40-AD	12	28	32	50	80.5	46	31.5	HCS008014C	TS5	HC12
132-01-405	JT40-HCM16-80.5	SK40-AD	16	34	38	50	80.5	49	33	HCS008014C	TS5	-
132-01-406	JT40-HCM20-80.5	SK40-AD	20	38	42	50	80.5	51	34	HCS008014C	TS5	HC20
132-01-407	JT40-HCM25-80.5	SK40-AD	25	53	55	66	80.5	57	22	HCS012014C	TS6	-
132-01-408	JT40-HCM32-80.5	SK40-AD	32	60	63	80	80.5	61	25.5	HCS012014C	TS6	HC32
132-01-501	JT50-HCM06-80.5	SK50-AD	6	22	26	50	80.5	37	29.5	HCS005014C	TS5	-
132-01-502	JT50-HCM08-80.5	SK50-AD	8	24	28	50	80.5	37	30	HCS006014C	TS5	-
132-01-503	JT50-HCM10-80.5	SK50-AD	10	26	30	50	80.5	41	31	HCS008014C	TS5	-
132-01-504	JT50-HCM12-80.5	SK50-AD	12	28	32	50	80.5	46	31.5	HCS008014C	TS5	HC12
132-01-505	JT50-HCM16-80.5	SK50-AD	16	34	38	50	80.5	49	34	HCS008014C	TS5	-
132-01-506	JT50-HCM20-80.5	SK50-AD	20	38	42	50	80.5	51	34	HCS008014C	TS5	HC20
132-01-507	JT50-HCM25-80.5	SK50-AD	25	53	57	66	80.5	57	34	HCS012014C	TS6	-
132-01-508	JT50-HCM32-80.5	SK50-AD	32	60	64	72	80.5	61	34	HCS012014C	TS6	HC32

REDUCING SLEEVE FOR HYDRAULIC EXPANSIONS CHUCK

- Radial run-out less than 5 μ .
- For clamping cutting tools with cylindric shank tolerance h6.



Order No.	Model	Size (mm)			
		dm	D	L1	L
100-01-001	HC12-3	3	12	16.5	47.5
100-01-002	HC12-4	4	12	16.5	47.5
100-01-003	HC12-5	5	12	16.5	47.5
100-01-004	HC12-6	6	12	24	47.5
100-01-005	HC12-8	8	12	25.5	47.5
100-01-006	HC20-3	3	20	17.5	52.5
100-01-007	HC20-4	4	20	17.5	52.5
100-01-008	HC20-5	5	20	17.5	52.5
100-01-009	HC20-6	6	20	25.5	52.5
100-01-010	HC20-7	7	20	28	52.5
100-01-011	HC20-8	8	20	28	52.5
100-01-012	HC20-9	9	20	32.5	52.5
100-01-013	HC20-10	10	20	32.5	52.5
100-01-014	HC20-11	11	20	36	52.5
100-01-015	HC20-12	12	20	36	52.5
100-01-016	HC20-13	13	20	36.5	52.5
100-01-017	HC20-14	14	20	37	52.5
100-01-018	HC20-15	15	20	37	52.5
100-01-019	HC20-16	16	20	37.5	52.5
100-01-020	HC32-6	6	32	25.5	63.5
100-01-021	HC32-8	8	32	27.5	63.5
100-01-022	HC32-10	10	32	30.5	63.5
100-01-023	HC32-12	12	32	30.5	63.5
100-01-024	HC32-14	14	32	32.5	63.5
100-01-025	HC32-16	16	32	40.5	63.5
100-01-026	HC32-18	18	32	40.5	63.5
100-01-027	HC32-20	20	32	40.5	63.5
100-01-028	HC32-25	25	32	48.5	63.5

HYDRAULIC EXPANSIONS CHUCK SET

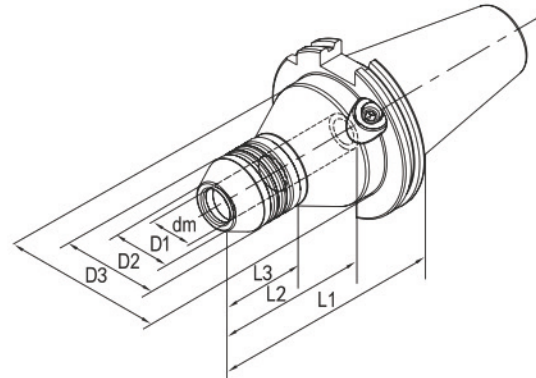
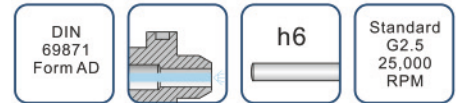
- each set including 1pc each of SK40-AD hydraulic expansion chuck,HC20-6,HC20-8,HC20-10,HC20-12,HC20-16 (internal dia:6,8,10,12,16mm) reducing sleeve and screw wrench,pack in strong aluminium box.



ORDER NO.132-01-S04

PRECISION HYDRAULIC EXPANSIONS CHUCK

- Used on CNC tool grinding machine for grinding/sharpening of drill, reamer, end mill etc.
- High precision and Radial Run-out not more than 2μ at 4d checking point.
- Super transmitted torque for high clamping reliability.
- For clamping cylindric shank tolerance h6.
- Axial length adjustment available and max. adjustment travel 10mm.
- Can be operated frequently long time and keep good repeatability.



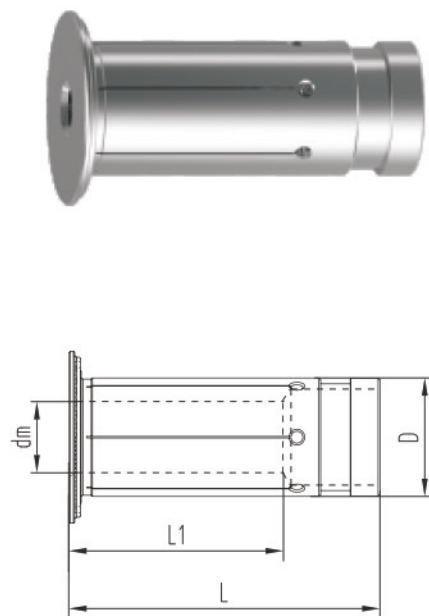
Order No.	Modle	Shank	Size(mm)							Wrench	for Collets
			dm	D1	D2	D3	L1	L2	L3		
132-01-001	JT50-HCM12-110M	SK50-AD	12	21.5	36.5	60	110	50	55	TS5	HC12..M
132-01-002	JT50-HCM20-110M	SK50-AD	20	28	42	70	110	95	47	TS5	HC20..M
132-01-003	JT50-HCM32-110M	SK50-AD	32	40	54	70	110	95	62.5	TS5	HC32..M

PRECISION REDUCING SLEEVE FOR HYDRAULIC CHUCK

- Radial run-out less than 3μ .
- Used for grinding/sharpening of drill, reamer, end mill etc.
- For clamping cutting tools with cylindric shank tolerance h6

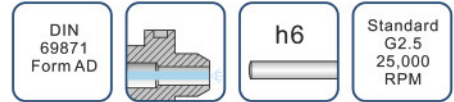


Order No.	Modle	Size (mm)			
		dm	D	L1	L
100-01-101	HC12-3M	3	12	16.5	47.5
100-01-102	HC12-4M	4	12	16.5	47.5
100-01-103	HC12-5M	5	12	16.5	47.5
100-01-104	HC12-6M	6	12	24	47.5
100-01-105	HC12-8M	8	12	25.5	47.5
100-01-106	HC20-3M	3	20	17.5	52.5
100-01-107	HC20-4M	4	20	17.5	52.5
100-01-108	HC20-5M	5	20	17.5	52.5
100-01-109	HC20-6M	6	20	25.5	52.5
100-01-110	HC20-7M	7	20	28	52.5
100-01-111	HC20-8M	8	20	28	52.5
100-01-112	HC20-9M	9	20	32.5	52.5
100-01-113	HC20-10M	10	20	32.5	52.5
100-01-114	HC20-11M	11	20	36	52.5
100-01-115	HC20-12M	12	20	36	52.5
100-01-116	HC20-13M	13	20	36.5	52.5
100-01-117	HC20-14M	14	20	37	52.5
100-01-118	HC20-15M	15	20	37	52.5
100-01-119	HC20-16M	16	20	37.5	52.5
100-01-120	HC32-6M	6	32	25.5	63.5
100-01-121	HC32-8M	8	32	27.5	63.5
100-01-122	HC32-10M	10	32	30.5	63.5
100-01-123	HC32-12M	12	32	30.5	63.5
100-01-124	HC32-14M	14	32	32.5	63.5
100-01-125	HC32-16M	16	32	40.5	63.5
100-01-126	HC32-18M	18	32	40.5	63.5
100-01-127	HC32-20M	20	32	40.5	63.5
100-01-128	HC32-25M	25	32	48.5	63.5

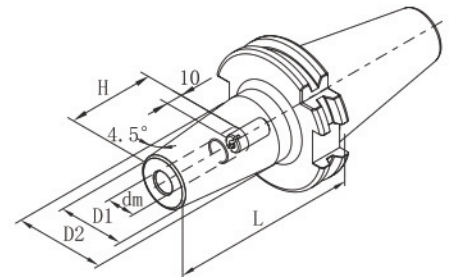


SHRINK FIT CHUCK

- Made of high-temperature steel and fit for High frequency heating machine.
- For clamping cutting tools with cylindric shank tolerance h6
- High tool-gripping strength and machining accuracy
- 360 degree concentric clamping without set screws, collets.
- Engineered to produce the high degree of balance available
- With indicating line for shank depth of cutter.

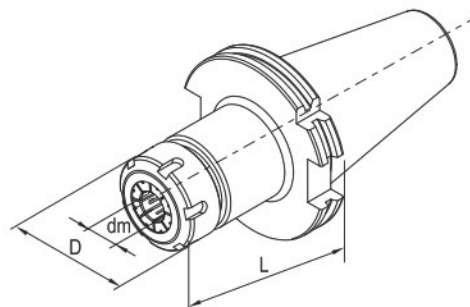
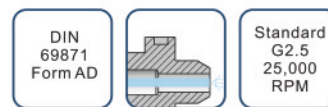


Order No.	Model	Shank	Size(mm)					Screw
			dm	D1	D2	L	H	
132-02-401	JT40-SFX03-80	SK40-AD	3	10	-	80	10	-
132-02-402	JT40-SFX04-80	SK40-AD	4	10	-	80	12	-
132-02-403	JT40-SFX05-80	SK40-AD	5	10	-	80	15	-
132-02-404	JT40-SFX06-80	SK40-AD	6	21	27	80	36	S005014C
132-02-405	JT40-SFX06-120	SK40-AD	6	21	27	120	36	S005014C
132-02-406	JT40-SFX06-160	SK40-AD	6	21	32	160	36	S005014C
132-02-407	JT40-SF08-80	SK40-AD	8	21	27	80	36	S006014C
132-02-408	JT40-SF08-120	SK40-AD	8	21	27	120	36	S006014C
132-02-409	JT40-SF08-160	SK40-AD	8	21	32	160	36	S006014C
132-02-410	JT40-SF10-80	SK40-AD	10	24	32	80	42	S008014C
132-02-411	JT40-SF10-120	SK40-AD	10	24	32	120	42	S008014C
132-02-412	JT40-SF10-160	SK40-AD	10	24	34	160	42	S008014C
132-02-413	JT40-SF12-80	SK40-AD	12	24	32	80	47	S008014C
132-02-414	JT40-SF12-120	SK40-AD	12	24	32	120	47	S008014C
132-02-415	JT40-SF12-160	SK40-AD	12	24	34	160	47	S008014C
132-02-416	JT40-SF14-80	SK40-AD	14	27	34	80	47	S008014C
132-02-417	JT40-SF14-120	SK40-AD	14	27	34	120	47	S008014C
132-02-418	JT40-SF14-160	SK40-AD	14	27	42	160	47	S008014C
132-02-419	JT40-SF16-80	SK40-AD	16	27	34	80	50	S012014C
132-02-420	JT40-SF16-120	SK40-AD	16	27	34	120	50	S012014C
132-02-421	JT40-SF16-160	SK40-AD	16	27	42	160	50	S012014C
132-02-422	JT40-SF18-80	SK40-AD	18	33	42	80	50	S012014C
132-02-423	JT40-SF18-120	SK40-AD	18	33	42	120	50	S012014C
132-02-424	JT40-SF18-160	SK40-AD	18	33	50	160	50	S012014C
132-02-425	JT40-SF20-80	SK40-AD	20	33	42	80	52	S016016C
132-02-426	JT40-SF20-120	SK40-AD	20	33	42	120	52	S016016C
132-02-427	JT40-SF20-160	SK40-AD	20	33	50	160	52	S016016C
132-02-428	JT40-SF25-100	SK40-AD	25	44	50	100	58	S016016C
132-02-429	JT40-SF25-120	SK40-AD	25	44	50	120	58	S016016C
132-02-430	JT40-SF25-160	SK40-AD	25	44	50	160	58	S016016C
132-02-501	JT50-SFX06-80	SK50-AD	6	21	27	80	36	S005014C
132-02-502	JT50-SFX06-120	SK50-AD	6	21	27	120	36	S005014C
132-02-503	JT50-SFX06-160	SK50-AD	6	21	32	160	36	S005014C
132-02-504	JT50-SF08-80	SK50-AD	8	21	27	80	36	S006014C
132-02-505	JT50-SF08-120	SK50-AD	8	21	27	120	36	S006014C
132-02-506	JT50-SF08-160	SK50-AD	8	21	32	160	36	S006014C
132-02-507	JT50-SF10-80	SK50-AD	10	24	32	80	42	S008014C
132-02-508	JT50-SF10-120	SK50-AD	10	24	32	120	42	S008014C
132-02-509	JT50-SF10-160	SK50-AD	10	24	34	160	42	S008014C
132-02-510	JT50-SF12-80	SK50-AD	12	24	32	80	47	S008014C
132-02-511	JT50-SF12-120	SK50-AD	12	24	32	120	47	S008014C
132-02-512	JT50-SF12-160	SK50-AD	12	24	34	160	47	S008014C
132-02-513	JT50-SF14-80	SK50-AD	14	27	34	80	47	S008014C
132-02-514	JT50-SF14-120	SK50-AD	14	27	34	120	47	S008014C
132-02-515	JT50-SF14-160	SK50-AD	14	27	42	160	47	S008014C
132-02-516	JT50-SF16-80	SK50-AD	16	27	34	80	50	S012014C
132-02-517	JT50-SF16-120	SK50-AD	16	27	34	120	50	S012014C
132-02-518	JT50-SF16-160	SK50-AD	16	27	42	160	50	S012014C
132-02-519	JT50-SF18-80	SK50-AD	18	33	42	80	50	S012014C
132-02-520	JT50-SF18-120	SK50-AD	18	33	42	120	50	S012014C
132-02-521	JT50-SF18-160	SK50-AD	18	33	51	160	50	S012014C
132-02-522	JT50-SF20-80	SK50-AD	20	33	42	80	52	S016016C
132-02-523	JT50-SF20-120	SK50-AD	20	33	42	120	52	S016016C
132-02-524	JT50-SF20-160	SK50-AD	20	33	51	160	52	S016016C
132-02-525	JT50-SF25-100	SK50-AD	25	44	53	100	58	S016016C
132-02-526	JT50-SF25-120	SK50-AD	25	44	53	120	58	S016016C
132-02-527	JT50-SF25-160	SK50-AD	25	44	60	160	58	S016016C
132-02-528	JT50-SF32-100	SK50-AD	32	44	53	100	58	S016016C
132-02-529	JT50-SF32-120	SK50-AD	32	44	53	120	58	S016016C
132-02-530	JT50-SF32-160	SK50-AD	32	44	60	160	58	S016016C



ER COLLET CHUCK

- Radial run-out less than 0.01mm.
- Constructed of alloy steel for long, durable service life.
- For clamping tools with plain shank in collets to DIN6499.
- Supplied with high performance clamping nut.



Order No.	Model	Shank	Size(mm)			Nuts	Screw	For Collets	Wrench
			dm	D	L				
132-04-401	JT40-ER11-70	SK40-AD	0.5-7	19	70	CN11HS	SER11C	ER11	W17D
132-04-402	JT40-ER11-120	SK40-AD	0.5-7	19	120	CN11HS	SER11C	ER11	W17D
132-04-403	JT40-ER16-70	SK40-AD	0.5-10	28	70	CN16HS	SER16C	ER16	W25D
132-04-404	JT40-ER16-120	SK40-AD	0.5-10	28	120	CN16HS	SER16C	ER16	W25D
132-04-405	JT40-ER20-80	SK40-AD	1.0-13	34	80	CN20HS	SER20C	ER20	W30D
132-04-406	JT40-ER20-120	SK40-AD	1.0-13	34	120	CN20HS	SER20C	ER20	W30D
132-04-407	JT40-ER25-80	SK40-AD	1.0-16	42	80	CN25B	SER25C	ER25	YER25B
132-04-408	JT40-ER25-120	SK40-AD	1.0-16	42	120	CN25B	SER25C	ER25	YER25B
132-04-409	JT40-ER32-60	SK40-AD	2.0-20	50	60	CN32B	SER32C	ER32	YER32B
132-04-410	JT40-ER32-120	SK40-AD	2.0-20	50	120	CN32B	SER32C	ER32	YER32B
132-04-411	JT40-ER40-80	SK40-AD	3.0-26	63	80	CN40B	SER40C	ER40	YER40B
132-04-501	JT50-ER16-60	SK50-AD	0.5-10	28	60	CN16HS	SER16C	ER16	W25D
132-04-502	JT50-ER16-120	SK50-AD	0.5-10	28	120	CN16HS	SER16C	ER16	W25D
132-04-503	JT50-ER20-70	SK50-AD	1.0-13	34	70	CN20HS	SER20C	ER20	W30D
132-04-504	JT50-ER20-120	SK50-AD	1.0-13	34	120	CN20HS	SER20C	ER20	W30D
132-04-505	JT50-ER25-70	SK50-AD	1.0-16	42	70	CN25B	SER25C	ER25	YER25B
132-04-506	JT50-ER25-120	SK50-AD	1.0-16	42	120	CN25B	SER25C	ER25	YER25B
132-04-507	JT50-ER32-90	SK50-AD	2.0-20	50	90	CN32B	SER32C	ER32	YER32B
132-04-508	JT50-ER32-120	SK50-AD	2.0-20	50	120	CN32B	SER32C	ER32	YER32B
132-04-509	JT50-ER40-100	SK50-AD	3.0-26	50	100	CN40B	SER40C	ER40	YER40B



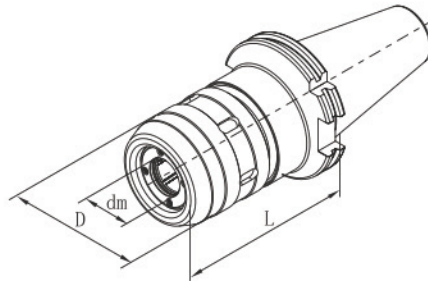
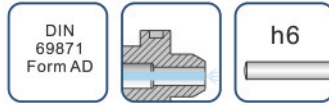
ER COLLET CHUCK & COLLET SET

- Each set including 1pc of SK40-AD ER collet chuck and 9pc of ER collets,
- Equipped with ER collet nut wrench and pack in strong aluminium box.
- Long working life time due to system radial run-out less than 0.01mm.

Order No.	Shank Model	Collet	Wrench
132-04-S41	JT40-ER16-70	ER16: dia.2-3-4-5-6-7-8-9-10mm	W25D
132-04-S42	JT40-ER25-80	ER25: dia.3-4-5-6-8-10-12-14-16mm	YER25B
132-04-S43	JT40-ER32-60	ER32: dia.4-6-8-10-12-14-16-18-20mm	YER32B

POWER MILLING CHUCK

- Very high clamping force and High stability improving surface quality and tool life time.
- Optimised design resulting in Ideal damping characteristics and low vibration.
- Radial run-out less than 0.01mm.
- For clamping cutting tools with cylindric shank tolerance h6
- Flexible clamping range by using reducing sleeve for various tool shank.



Order No.	Model	Shank	Size(mm)			For Collets	Wrench
			dm	D	L		
132-03-401	JT40-C20-95	SK40-AD	20	55	95	C20	WC20
132-03-402	JT40-C25-100	SK40-AD	25	62	100	C25	WC25
132-03-403	JT40-C32-105	SK40-AD	32	72	105	C32	WC32
132-03-501	JT50-C20-105	SK50-AD	20	55	105	C20	WC20
132-03-502	JT50-C25-110	SK50-AD	25	62	110	C25	WC25
132-03-503	JT50-C32-110	SK50-AD	32	72	110	C32	WC32
132-03-504	JT50-C42-110	SK50-AD	42	87	110	C42	WC42

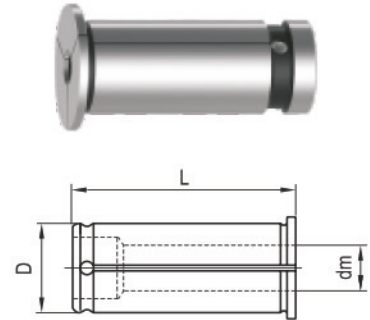
POWER MILLING CHUCK SET

- Each set including 1pc of SK40-AD power milling chuck and 6pc of reducing sleeve, Equipped with wrench and pack in strong aluminium box.
- Long working life time du to system radial run-out less than 0.01mm.



REDUCING SLEEVE FOR POWER MILLING CHUCK

- For drill,milling,reaming.
- Radial run-out less than 0.01mm
- For clamping cutting tools with cylindric shank tolerance h6



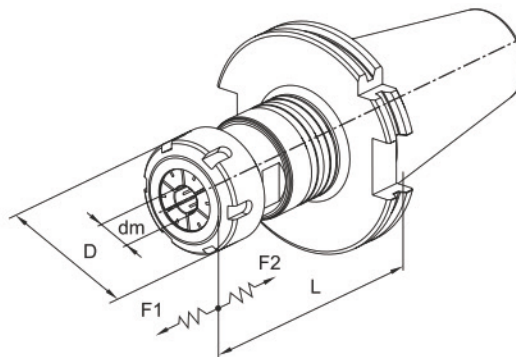
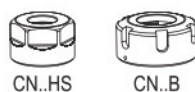
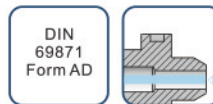
Order No.	Modle	Size (mm)		
		dm	D	L
100-03-001	C20-3	3	20	55
100-03-002	C20-4	4	20	55
100-03-003	C20-5	5	20	55
100-03-004	C20-6	6	20	55
100-03-005	C20-8	8	20	55
100-03-006	C20-10	10	20	55
100-03-007	C20-12	12	20	55
100-03-008	C20-14	14	20	55
100-03-009	C20-16	16	20	55
100-03-010	C25-4	4	25	60
100-03-011	C25-5	5	25	60
100-03-012	C25-6	6	25	60
100-03-013	C25-8	8	25	60
100-03-014	C25-10	10	25	60
100-03-015	C25-12	12	25	60
100-03-016	C25-14	14	25	60
100-03-017	C25-16	16	25	60
100-03-018	C25-18	18	25	60
100-03-019	C25-20	20	25	60

Order No.	Modle	Size (mm)		
		dm	D	L
100-03-020	C32-6	6	32	65
100-03-021	C32-8	8	32	65
100-03-022	C32-10	10	32	65
100-03-023	C32-12	12	32	65
100-03-024	C32-14	14	32	65
100-03-025	C32-16	16	32	65
100-03-026	C32-18	18	32	65
100-03-027	C32-20	20	32	65
100-03-028	C32-25	25	32	65
100-03-029	C42-6	6	42	70
100-03-030	C42-8	8	42	70
100-03-031	C42-10	10	42	70
100-03-032	C42-12	12	42	70
100-03-033	C42-14	14	42	70
100-03-034	C42-16	16	42	70
100-03-035	C42-18	18	42	70
100-03-036	C42-20	20	42	70
100-03-037	C42-25	25	42	70
100-03-038	C42-32	32	42	70

Order No.	content		
	1pc chuck	1pc each size of reducing sleeve	1pc wrench
111-03-S04	JT40-C32-105	C32-8,C32-10,C32-12,C32-16,C32-20,C32-25 (internal dia:8,10,12,16,20,25mm)	WC32
111-03-S05	JT50-C32-110	C32-8,C32-10,C32-12,C32-16,C32-20,C32-25 (internal dia:8,10,12,16,20,25mm)	WC32

AUTOMATIC MICRO-COMPENSATION TAPPING CHUCK

- Compensation capacity $\pm 0.5\text{mm}$.
- Precision producing true thread with quality surface.
- Improving effectiveness and tap life time.
- For NC machines and machining center.
- For right hand and left hand thread.

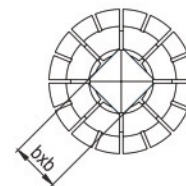
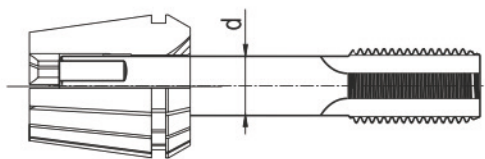


Order No.	Model	SHANK	capacity	Size(mm)					Nuts	for Collets
				D	dm	L	F1	F2		
132-13-401	JT40-V20-80	SK40-AD	M4-M12(No.8-7/16)	34	3-10	80	0.5	0.5	CN20HS	ER20
132-13-501	JT50-V20-80	SK50-AD	M4-M12(No.8-7/16)	34	3-10	80	0.5	0.5	CN20HS	ER20
132-13-402	JT40-V32-95	SK40-AD	M4-M20(No.8-3/4)	50	3-16	95	0.5	0.5	CN32B	ER32
132-13-502	JT50-V32-95	SK50-AD	M4-M20(No.8-3/4)	50	3-16	95	0.5	0.5	CN32B	ER32

Optional accessories:	V20	V32
Coolant Nuts	CN20C	CN32C
Sealing Disk	DER20C	DER32C
Wrench for Nut	W30D	YER32B
Wrench for fixing	W24D	W36D

ER TAP COLLET

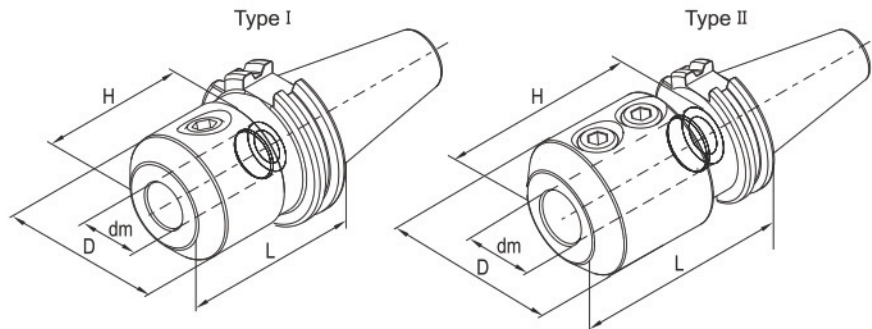
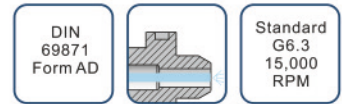
- Special design with internal square drive for machine taps.



Order No.	Modle	For taps				
		Shank d(mm)	Square b(mm)	ISO529/ISO2283	DIN374/DIN376	JISB4430
100-13-201	ER20-6.3B5	6.3	5	M8	M8	M6/M8
100-13-202	ER20-7B5.5	7	5.5	-	M10	M10
100-13-203	ER20-8B6.3	8	6.3	M10	-	-
100-13-204	ER20-8.5B6.5	8.5	6.5	-	-	M12
100-13-205	ER20-9B7.1	9	7.1	M12	M12	-
100-13-301	ER32-6.3B5	6.3	5	M8	M8	M6/M8
100-13-302	ER32-7B5.5	7	5.5	-	M10	M10
100-13-303	ER32-8B6.3	8	6.3	M10	-	-
100-13-304	ER32-8.5B6.5	8.5	6.5	-	-	M12
100-13-305	ER32-9B7.1	9	7.1	M12	M12	-
100-13-306	ER32-12B9	12	9	-	M16	-
100-13-307	ER32-12.5B10	12.5	10	M16	-	M16
100-13-308	ER32-14B11.2	14	11.2	M18/M20	M18	M18
100-13-309	ER32-15B12	15	12	-	-	M20
100-13-310	ER32-16B12	16	12	-	M20	-

SIDE LOCK HOLDER

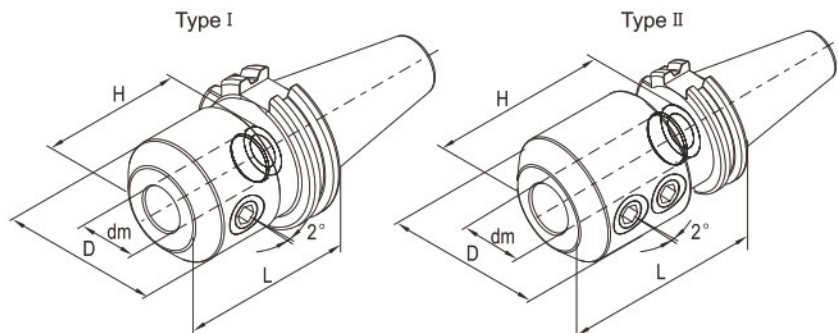
• For clamping tools with weldon shank to DIN1835 form B and DIN6535 form HB.



Order No.	Model	Shank	Size(mm)				Screw	Type
			dm	D	L	H		
132-05-401	JT40-XP16-63	SK40-AD	16	48	63	52	SXP16	I
132-05-402	JT40-XP20-70	SK40-AD	20	50	70	54	SXP20	I
132-05-403	JT40-XP25-100	SK40-AD	25	60	100	66	SXP25	II
132-05-404	JT40-XP32-100	SK40-AD	32	68	100	70	SXP32	II
132-05-501	JT50-XP16-63	SK50-AD	16	48	63	52	SXP16	I
132-05-502	JT50-XP20-63	SK50-AD	20	50	63	54	SXP20	I
132-05-503	JT50-XP25-80	SK50-AD	25	60	80	66	SXP25	II
132-05-504	JT50-XP32-100	SK50-AD	32	68	100	70	SXP32	II
132-05-505	JT50-XP40-110	SK50-AD	40	84	110	80	SXP32	II

2° SIDE LOCK HOLDER

• For clamping tools with parallel shank and inclined clamping flat(2°)
DIN1835 form E and DIN6535 form HE.

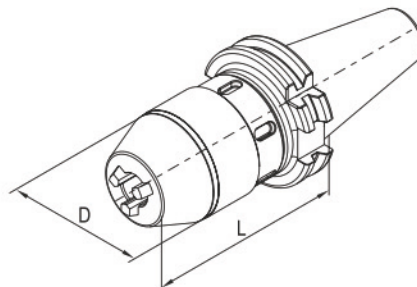


Order No.	Model	Shank	Size(mm)				Screw	Screw	Type
			dm	D	L	H			
132-05-405	JT40-XPD16-63	SK40-AD	16	48	63	52	SXP16	S012014C	I
132-05-406	JT40-XPD20-70	SK40-AD	20	52	70	54	SXP20	S016016C	I
132-05-407	JT40-XPD25-100	SK40-AD	25	65	100	59	SXP25	S020016C	II
132-05-408	JT40-XPD32-100	SK40-AD	32	72	100	63	SXP32	S020016C	II
132-05-506	JT50-XPD16-63	SK50-AD	16	48	63	52	SXP16	S012014C	I
132-05-507	JT50-XPD20-63	SK50-AD	20	52	63	54	SXP20	S016016C	I
132-05-508	JT50-XPD25-80	SK50-AD	25	65	80	59	SXP25	S020016C	II
132-05-509	JT50-XPD32-100	SK50-AD	32	72	100	63	SXP32	S020016C	II

INTEGRAL DRILL CHUCK HOLDER

DIN
69871
Form A

- Radial run-out less than 0.05mm.
- Wrench-Lock chucks incorporate wrench groove for additional tightening force.
- Integral shank design provides for greater accuracy and safety.
- Wrench included.



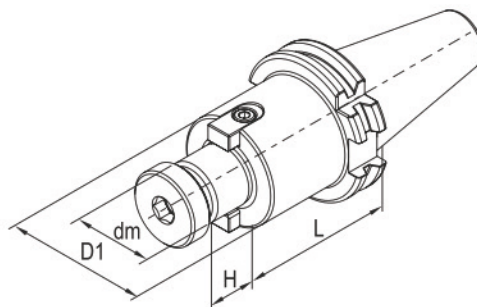
Order No.	Model	Shank	Capacity (mm)	Size(mm)		Wrench
				D	L	
132-12-401	JT40-KPU08-80	SK40-AD	0.5-8	37.5	80	WCN20
132-12-402	JT40-KPU13-90	SK40-AD	1.0-13	50.5	90	WCN32
132-12-403	JT40-KPU16-105	SK40-AD	3-16	57	105	WCN32
132-12-501	JT50-KPU08-80	SK50-AD	0.5-8	37.5	80	WCN20
132-12-502	JT50-KPU13-100	SK50-AD	1.0-13	50.5	100	WCN32
132-12-503	JT50-KPU16-105	SK50-AD	3-16	57	105	WCN32

SHELL END MILL ARBOR

DIN
69871
Form A

Standard
G6.3
15,000
RPM

- For clamping shell end mill and milling cutter.

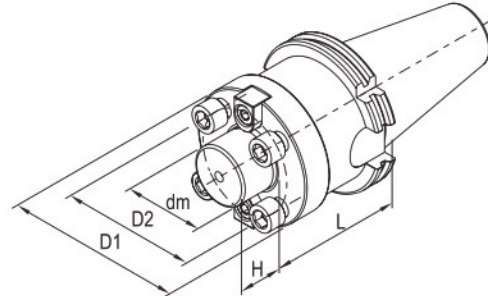


Order No.	Model	Shank	Size(mm)				Screw	Key	Screw
			dm	D1	L	H			
131-07-401	JT40-XMB16-60	SK40-A	16	34	60	17	MS08030	JC08017	MS03008
131-07-402	JT40-XMB16-120	SK40-A	16	34	120	17	MS08030	JC08017	MS03008
131-07-403	JT40-XMB22-60	SK40-A	22	42	60	19	MS10030	JC10021	MS04010
131-07-404	JT40-XMB22-120	SK40-A	22	42	120	19	MS10030	JC10021	MS04010
131-07-405	JT40-XMB27-60	SK40-A	27	60	60	21	SXM27	JC12023	MS05016
131-07-406	JT40-XMB27-120	SK40-A	27	60	120	21	SXM27	JC12023	MS05016
131-07-407	JT40-XMB32-60	SK40-A	32	78	60	24	SXM32	JC14020	MS06020
131-07-408	JT40-XMB40-60	SK40-A	40	89	60	27	SXM40	KXM40	MS08020
131-07-501	JT50-XMB16-60	SK50-A	16	34	60	17	MS08030	JC08017	MS03008
131-07-502	JT50-XMB16-120	SK50-A	16	34	120	17	MS08030	JC08017	MS03008
131-07-503	JT50-XMB22-60	SK50-A	22	42	60	19	MS10030	JC10021	MS04010
131-07-504	JT50-XMB22-120	SK50-A	22	42	120	19	MS10030	JC10021	MS04010
131-07-505	JT50-XMB27-60	SK50-A	27	60	60	21	SXM27	JC12023	MS05016
131-07-506	JT50-XMB27-90	SK50-A	27	60	90	21	SXM27	JC12023	MS05016
131-07-507	JT50-XMB27-120	SK50-A	27	60	120	21	SXM27	JC12023	MS05016
131-07-508	JT50-XMB32-75	SK50-A	32	78	75	24	SXM32	JC14020	MS06020
131-07-509	JT50-XMB40-75	SK50-A	40	89	75	27	SXM40	KXM40	MS08020

FACE MILLING CUTTER HOLDER

- For clamping face milling cutter with 4 holes .
- Increased collar contact surface.
- Suppled with lock screws.

DIN 69871 Form A	Standard G6.3 8,000 RPM
------------------------	----------------------------------

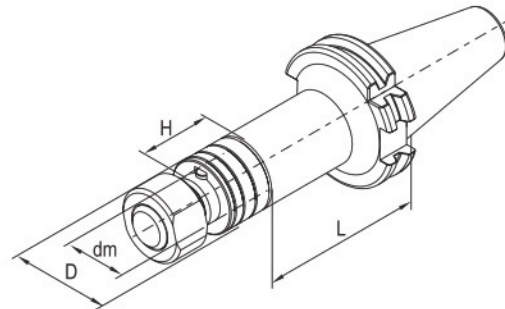


Order No.	Model	Shank	Size(mm)					Screw (4pcs)	Key	Screw
			dm	D1	D2	L	H			
131-09-401	JT40-XMC40-60	SK40-A	40	89	66.7	60	27	MS12045	KXM40	MS08020
131-09-501	JT50-XMC40-75	SK50-A	40	89	66.7	75	27	MS12045	KXM40	MS08020
131-09-502	JT50-XMC60-75	SK50-A	60	129	101.6	75	38	MS16045	KXMC60	MS10025

SLOTING CUTTER HOLDER

- For clamping saws and side milling cutter.
- Furnished complete with assorted spacers,nut and key.

DIN 69871 Form A	Standard G6.3 8,000 RPM
------------------------	----------------------------------



Order No.	Model	Shank	尺寸Size(mm)				Nuts	Spacer	Key
			dm	D	L	H			
131-10-401	JT40-XS22-75	SK40-A	22	34	75	30	MXS22	SD22	JA06020
131-10-402	JT40-XS22-120	SK40-A	22	34	120	30	MXS22	SD22	JA06020
131-10-403	JT40-XS27-75	SK40-A	27	40	75	30	MXS27	SD27	JA07022
131-10-404	JT40-XS27-120	SK40-A	27	40	120	30	MXS27	SD27	JA07022
131-10-405	JT40-XS32-90	SK40-A	32	46	90	30	MXS32	SD32	JA08022
131-10-501	JT50-XS22-90	SK50-A	22	34	90	30	MXS22	SD22	JA06020
131-10-502	JT50-XS27-90	SK50-A	27	40	90	30	MXS27	SD27	JA07022
131-10-503	JT50-XS27-135	SK50-A	27	40	135	30	MXS27	SD27	JA07022
131-10-504	JT50-XS32-90	SK50-A	32	46	90	30	MXS32	SD32	JA08022
131-10-505	JT50-XS32-135	SK50-A	32	46	135	30	MXS32	SD32	JA08022
131-10-506	JT50-XS40-90	SK50-A	40	55	90	30	MXS40	SD40	JA10025
131-10-507	JT50-XS40-135	SK50-A	40	55	135	30	MXS40	SD40	JA10025
131-10-508	JT50-XS50-90	SK50-A	50	69	90	30	MXS50	SD50	JA12025